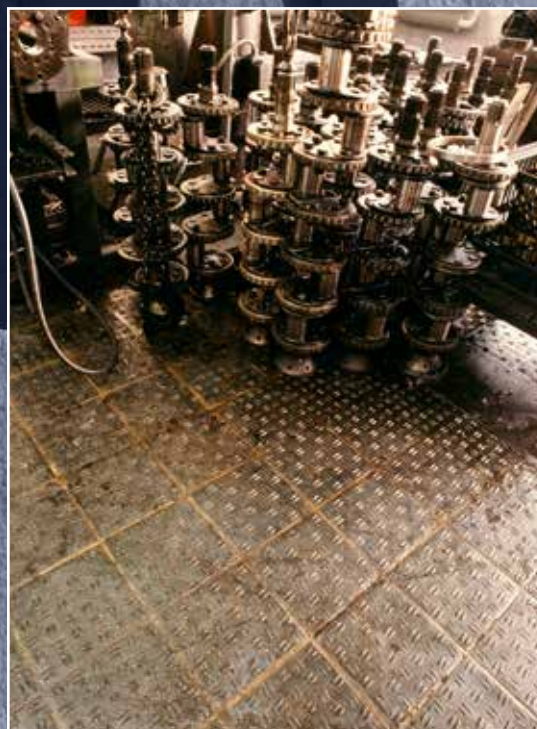


# Volceram Basalt Flooring

Hard-wearing commercial & industrial floor tiles  
made from natural neo-volcanic rock



GREENBANK GROUP UK INCORPORATING  
Terotech | Materials Handling | GAIM | Greenbank (Beijing) Trading Co.



# FORGED from the heart of volcanoes, our range of Volceram basalt tiles offer unrivalled resistance to abrasion and chemical damage, making them perfect for innumerable commercial and industrial applications.

Cast from one-million-year-old neo-volcanic rock, our Volceram basalt tiles offer a versatile solution for areas where a hard-wearing, easy clean flooring is essential.

They have already proved their worth in breweries and distilleries and are proving popular for industrial environments such as farming and food production thanks to the unique properties of basalt rock from which they are manufactured.

Four times harder than stone, and one of the toughest natural ceramic materials known to man, these textured tiles deliver matchless abrasion resistance, as well as a

non-porous surface that is hygienic and easy to clean. Offering superb versatility, Volceram tiles are already used in large processing plants, farm buildings, and manufacturing facilities across Europe.

Resistant to most chemicals, they are sought out by many industries for their durability. Surface liquids can be easily drained away, while animals, such as cattle, negotiate them with ease.

Suitable also for heavily trafficked areas, such as delivery compounds, the tiles are widely used in motor industry test tracks.

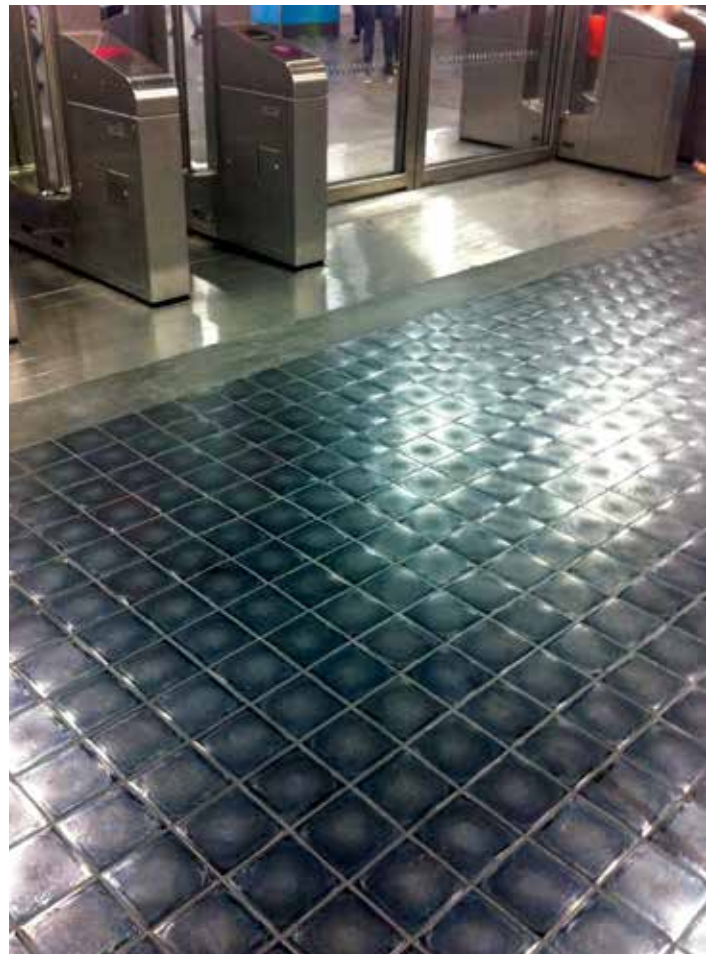


Basalt Flooring is as durable as the Earth itself, molten cast to achieve a uniform, crystalline structure for businesses seeking to partner practicality with a sleek look.



## Volceram Basalt Flooring

- More resilient than traditional or ceramic stone flooring
- Versatile for industry and farming
- Withstands heavy use
- Easy to clean
- Also suitable for commercial applications
- Resistant to water and most chemicals





# Volceram Flooring Tiles

## Anti-Slip Tiles



## Decorative Tiles



Charlotte



Florentine



Mava 1



Mava 2



Plain Hex



Thales: Alpha



Thales: Beta



Thales: Gamma



Thales: Delta



Cube

## Edges & Skirts



## General Specification:

Density: 3.00 gr/cm<sup>3</sup>

Hardness: 8-9 Mohs Scale

Abrasion Resistance: 2,940

(normal paving stone 862)

Chemical Resistance: Excellent  
to both acid and alkali

## Head office:

Hartshorne Road, Woodville  
Derbyshire DE11 7GT  
United Kingdom

Tel: +44 (0)845 0707 097  
Fax: +44 (0)845 0707 098  
Email: [info@greenbankgroup.com](mailto:info@greenbankgroup.com)